

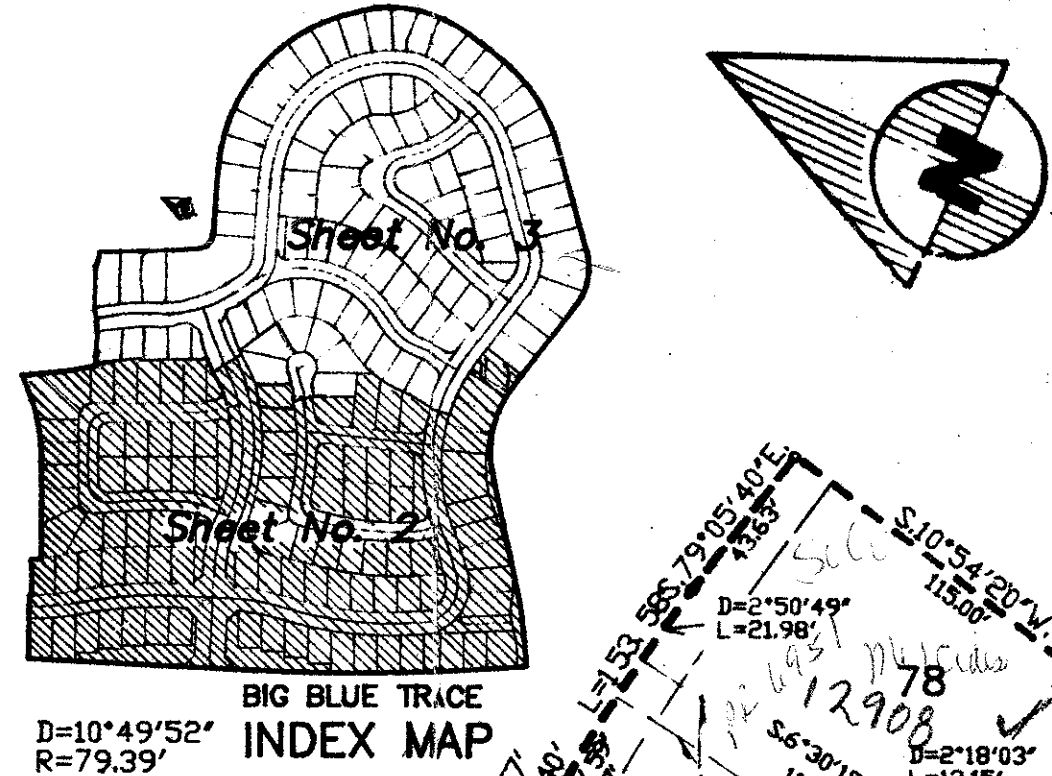
# MEADOWLAND COVE - PLAT NO. 1 OF WELLINGTON - P.U.D.

IN PART OF SECTIONS 9 & 10 TWP. 44S., RGE. 41E.  
PALM BEACH COUNTY, FLORIDA.

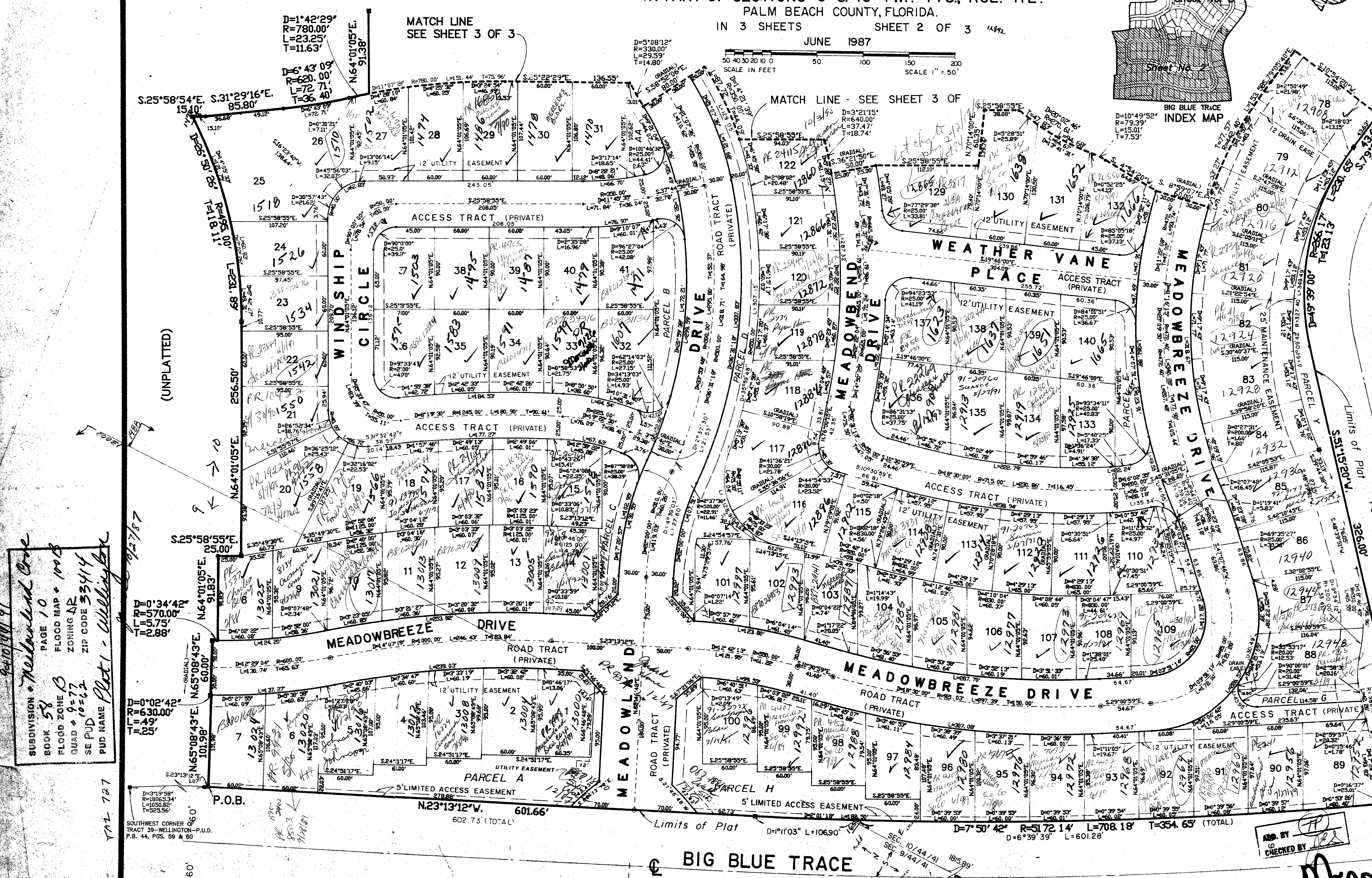
IN 3 SHEETS SHEET 2 OF 3

JUNE 1987

SCALE IN FEET  
SCALE 1" = 50'



10



- ### NOTES
- DENOTES PERMANENT REFERENCE MONUMENT.
  - DENOTES PERMANENT CONTROL POINT.
- ALL BEARINGS SHOWN HEREON ARE RELATIVE TO AN ASSUMED MERIDIAN USED THROUGHOUT WELLINGTON - P.U.D. THE WEST LINE OF SECTION 10-44-41 IS ASSUMED TO BEAR NORTH 01°40'24" EAST.
- BUILDING SETBACK LINES SHALL BE AS REQUIRED BY PALM BEACH COUNTY ZONING REGULATIONS.
- NO BUILDINGS OR ANY KIND OF CONSTRUCTION SHALL BE PLACED ON UTILITY, DRAINAGE, OR WATER AND SEWER EASEMENTS.
- NO STRUCTURES, TREES OR SHRUBS SHALL BE PLACED IN THE MAINTENANCE OR DRAINAGE EASEMENTS.
- LANDSCAPING ON UTILITY EASEMENTS SHALL BE ONLY WITH APPROVAL OF ALL UTILITIES OCCUPYING SAME.
- EASEMENTS ARE FOR PUBLIC UTILITIES, WATER AND SEWER UNLESS OTHERWISE NOTED.
- WHERE UTILITY AND DRAINAGE EASEMENTS CROSS, DRAINAGE EASEMENTS SHALL TAKE PRECEDENCE.
- PARCELS AA, BB, A THROUGH H AND J THROUGH P AS SHOWN HEREON ARE FOR COMMON DRAINAGE AND UTILITY PURPOSES.
- DEDICATIONS TO MEADOWLAND COVE HOMEOWNERS ASSOCIATION, INC. ARE NOT INTENDED TO CREATE ANY RIGHTS IN FAVOR OF THE GENERAL PUBLIC.
- THERE MAY BE ADDITIONAL RESTRICTIONS THAT HAVE NOT BEEN RECORDED ON THIS PLAT THAT MAY BE FOUND IN THE PUBLIC RECORDS OF THIS COUNTY.

SUBDIVISION - Meadowland Cove  
BOOK 58 PAGE 10  
FLOOD MAP # 100B  
ZONING AR  
QUAD # 9-6-77  
SE PUD  
ZIP CODE 33414  
PUD NAME Plat 1 - Wellington

SOUTHWEST CORNER OF TRACT 39 - WELLINGTON - P.U.D. P.B. 44, PGS. 59 & 60

MEADOWLAND COVE

Dailey-Fortney, Inc.  
land surveyors & engineers

3050 10th Avenue North, Suite B, Palm Beach Gardens, Florida 33418  
Phone 305-955-8171

BLOCK 18, GREENVIEW SHORES NO. 2 OF WELLINGTON - (P.U.D.) P.B. 31, PGS. 120-136

BLOCK 23 GREENVIEW SHORES NO. 2, OF WELLINGTON - (P.U.D.) P.B. 3, PGS. 120-136